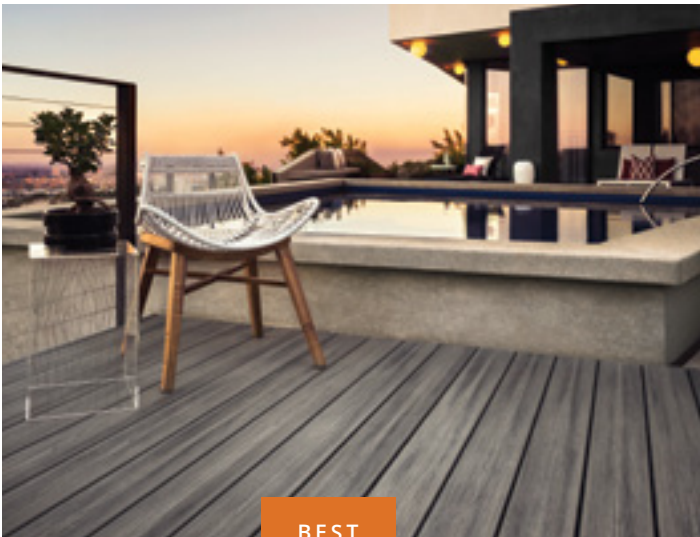




HARDSCAPE | DECKING | OUTDOOR LIVING | WATER FEATURES



**VISIT OUR SHOWROOM**  
1090 Zion Road, Bellefonte  
814-353-8300  
[jrsstatecollege.com](http://jrsstatecollege.com)



BEST

# Trex Transcend®

TROPICALS

Elevated aesthetics paired with the highest level of performance.

\$\$\$   ★★★★★



BEST

# Trex Transcend®

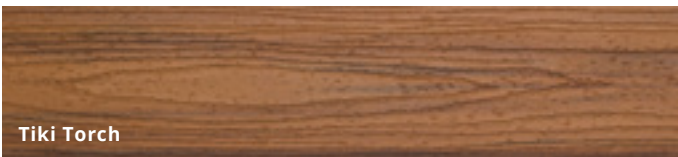
EARTH TONES

A classic look for uncompromising homes.

\$\$\$   ★★★★★



Island Mist



Tiki Torch



Havana Gold



Spiced Rum



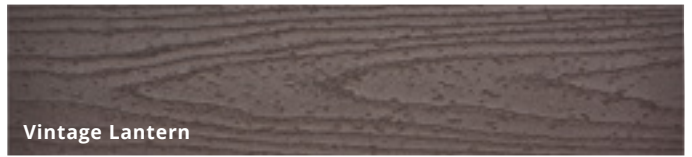
Lava Rock



Gravel Path



Rope Swing



Vintage Lantern

PRICE: \$ - \$\$\$

BOARD PROFILES:  SOLID

 SCALLOPED

Photos © 2019 Discovery or its subsidiaries and affiliates. All rights reserved.

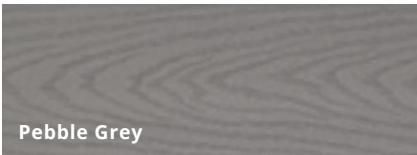


BETTER

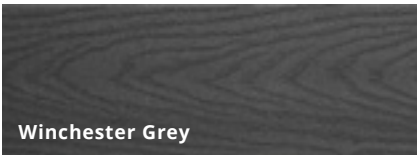
**Trex**Select®  
EARTH TONES

The perfect pairing of price and minimal maintenance.

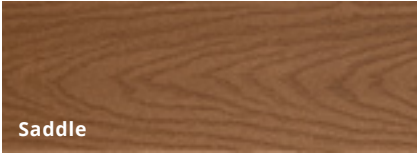
\$\$   ★★



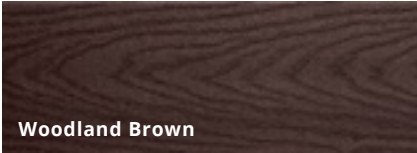
Pebble Grey



Winchester Grey



Saddle



Woodland Brown



Madeira

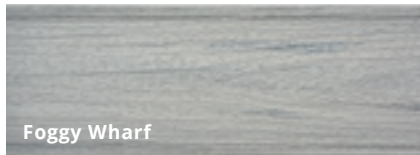


BETTER

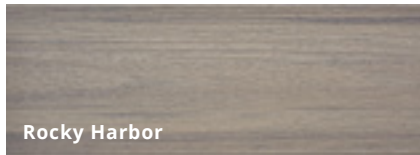
**Trex**Enhance®  
NATURALS

The beauty of wood with the ease of composite.

\$\$   ★



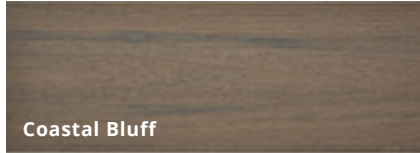
Foggy Wharf



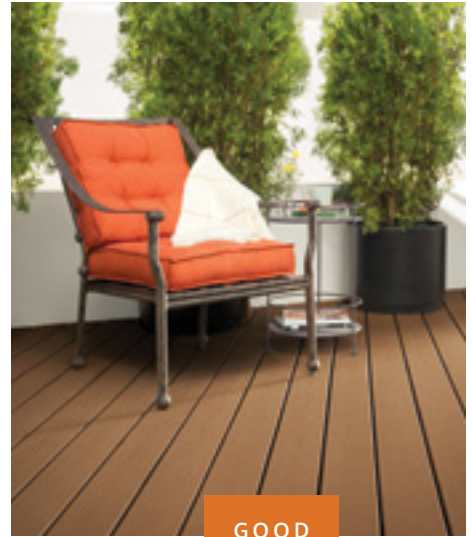
Rocky Harbor



Toasted Sand



Coastal Bluff



GOOD

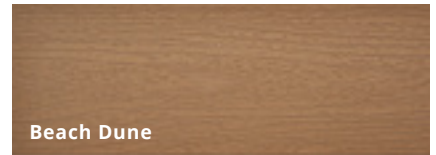
**Trex**Enhance®  
BASICS

Priced to put the pressure on treated lumber.

\$   ★



Clam Shell



Beach Dune



Saddle

**VISIT OUR SHOWROOM  
TO SEE TREX SAMPLES**

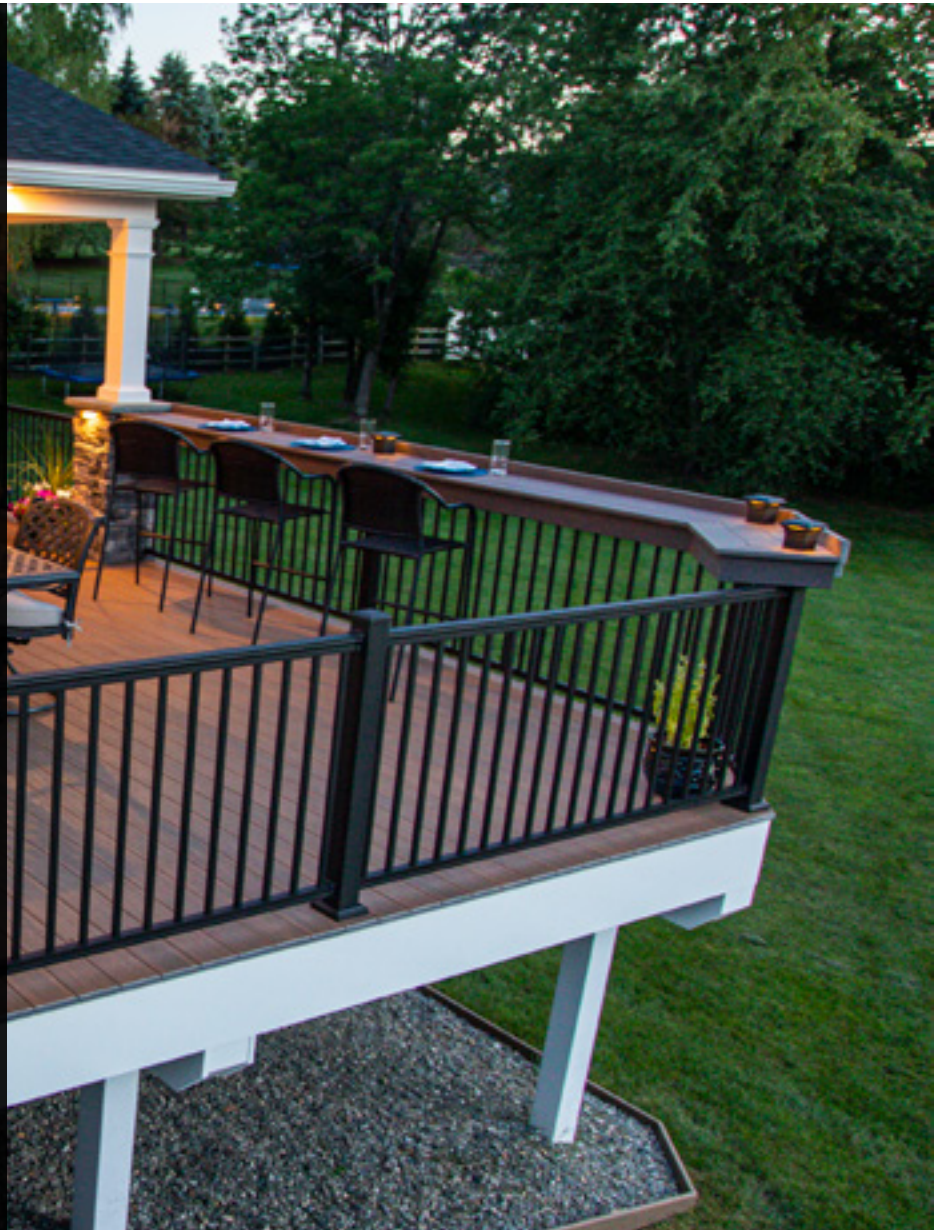
LIMITED RESIDENTIAL AND FADE & STAIN WARRANTIES:  25 YR

SCRATCH RESISTANCE: ★ - ★★★★★

## AMERICAN SERIES

# BRING TIMELESS LOOKS HOME

Key-Link's top-selling aluminum railing has a clean flat-top profile for a modern yet classic style. This versatile railing complements any design and can be paired with aluminum balusters or with Key-Link's horizontal or vertical cable infill for a truly custom look.

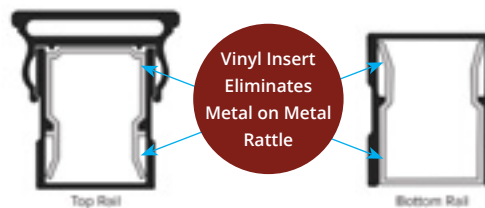


## PRODUCT DETAILS

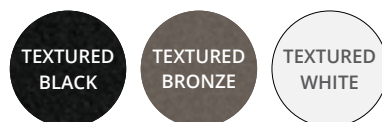
- Level and stair rail lengths come in 6' or 8' sections
- Available in 36" or 42" heights
- Meets IRC and IBC (42" only) code requirements
- Boxed sections include top and bottom rails, mounting brackets and hardware, infill\* and the installation guide

*\*Except Horizontal Cable*

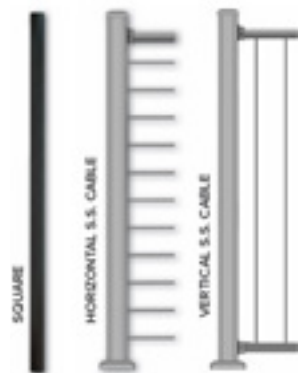
## PROFILE



## COLOR OPTIONS



## INFILL OPTIONS





200 SERIES

## SIMPLE AND STYLISH

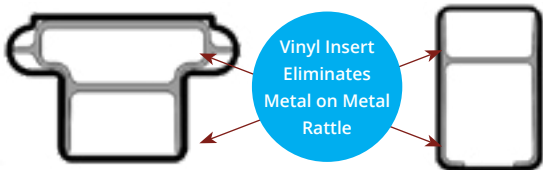
The unique design of the 200 Series makes it stand out among other railings. With its flat top, rounded sides, and classic good looks, the 200 Series can go almost anywhere.



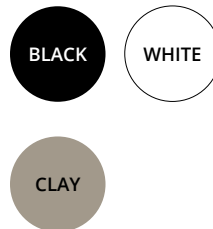
### PRODUCT DETAILS

- 3 3/16" Wide Top Rail
- Railing Height Options: 36" • 42"
- Railing Length Options: 5' • 6' • 7' • 8' • 10'

### PROFILE



### COLOR OPTIONS



### INFILL OPTIONS



# CONCRETE MASONRY PANEL



- Superior strength made specifically for outdoor use.
- Resistance to harsh temperatures and climates.
- Freeze/thaw stable for greater longevity.
- Abrasion and impact resistance.
- Quick and efficient installation!

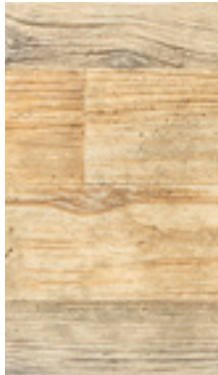


## Panel Offerings

Barnwood - Brown



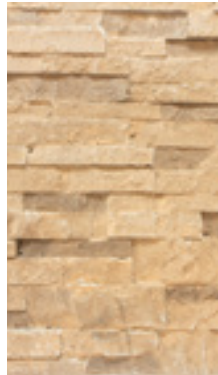
Barnwood - Custom



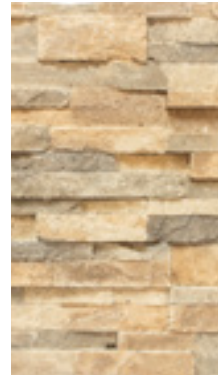
Barnwood - Gray



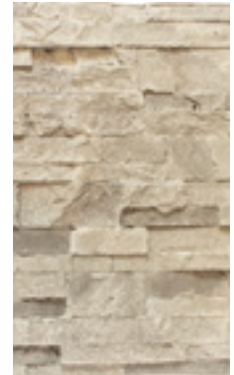
Dry Stack - Brown



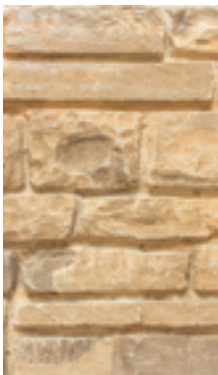
Dry Stack - Custom



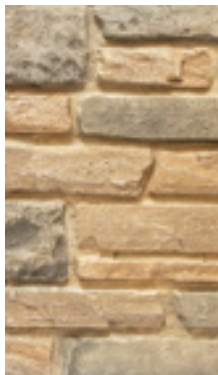
Dry Stack - Gray



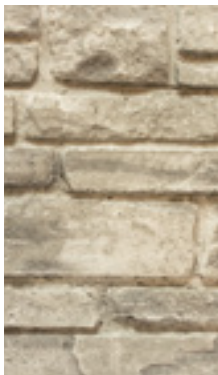
Ledge Stone - Brown



Ledge Stone - Custom



Ledge Stone - Gray



Random Rock - Brown



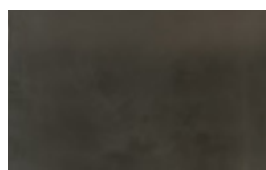
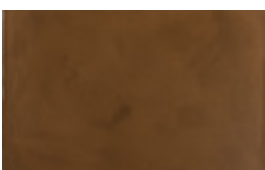
Random Rock - Custom



Random Rock - Gray



## Countertop Offerings



# CUSTOM OUTDOOR KITCHENS

- Get outside more, unplug, enjoy time alone or hosting family and friends with an expanded living space.
- Install on existing patio or deck
- Choosing a home remodeling project that includes creating or adding to an outdoor living area can set the stage – patio, deck or rooftop – for an outdoor kitchen.

## BENEFITS OF HAVING YOUR OWN OUTDOOR KITCHEN:

- Increases the Value of the Home
- Great for Entertaining
- Expands the Living Space
- Makes Cooking Easier
- Convenience
- Save on Utility Bills
- Save Money vs. Eating Out



7.5' S Custom Kitchen



15' L Custom Kitchen



10' S Custom Kitchen



20' L Custom Kitchen

# OUTDOOR WOOD-FIRED OVENS



Naturally aspirated outdoor wood fired ovens



## Karma 42"

### EXTERIOR DIMENSIONS

Oven Only including Stack  
H 49.5" W 42" D 40"

Stand Only  
H 40" W 50" D 41"

### INTERIOR DIMENSIONS

35.5" x 31.5" = 1118 sq. in.

Weight: 338 lbs.

**CONSTRUCTED WITH**  
304 Stainless Steel

**INSULATION**  
Tight Woven Fire Blanket  
Fiber Top and Bottom

**COOKING SURFACE**  
1 1/4" thick Tuscan-style  
Pizza Brick



## Karma 32"

### EXTERIOR DIMENSIONS

Oven Only including Stack  
H 49.5" W 33" D 30.5"

Stand Only  
H 40" W 41" D 31"

### INTERIOR DIMENSIONS

27.5" x 23.6" = 649 sq. in.

Weight: 206 lbs.

**CONSTRUCTED WITH**  
304 Stainless Steel

**INSULATION**  
Tight Woven Fire Blanket  
Fiber Top and Bottom

**COOKING SURFACE**  
1 1/4" thick Tuscan-style  
Pizza Brick



## Karma 25"

### EXTERIOR DIMENSIONS

Oven Only including Stack  
H 37" W 27" D 25"

Base Only  
H 4" W 27.5" D 25"

### INTERIOR DIMENSIONS

20" x 20" = 400 sq. in.

Weight: 119 lbs.

**CONSTRUCTED WITH**  
304 Stainless Steel

**INSULATION**  
Tight Woven Fire Blanket  
Fiber Top and Bottom



## Lil Luigi Portable Wood-Fired Oven

Hinged front door, sight window, high temp thermometer, removable stack, foldable legs

### EXTERIOR DIMENSIONS

Oven Only including Stack  
H 34" L 33" W 17.5"

### INTERIOR DIMENSIONS

13" x 13" = 169 sq. in.

Weight: 42 lbs.

**CONSTRUCTED WITH**  
430 Stainless Steel

**INCLUDES**  
Cutter, Peel, Cover and Poker



# OUTDOOR FIRE FEATURES

## Outdoor Living Series



Gas Fire Pit



Wood Fire Pit



Fireplace

## Wood & Gas Fireplaces



## Bar-Height Tables



## Custom Series

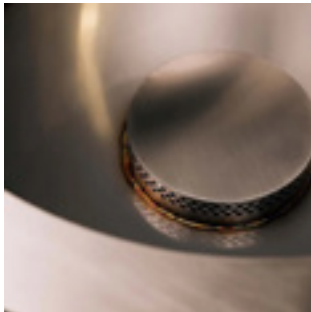


# FIREPLACE INSERTS



THE BEST ROOM IN THE HOUSE  
ISN'T IN THE HOUSE AT ALL

Premier provider of outdoor fire products specializing in burner systems, outdoor fire features & accessories for the outdoor fire industry.



## LESS SMOKE | LESS WOOD | LESS MESS

The **LUME** is a 100% Commercial-Grade Stainless steel smoke-less wood fire pit and is specifically designed to burn more efficiently and emit less smoke.

What's even more unique, the LUME has the ability to be freestanding or used as an insert. It can be installed in a Segmented Retaining Wall (SRW) or in most concrete masonry fire pit openings. Simply fasten the two bases of the pit and heavy-duty single rim together, and then drop the unit into the SRW.

- ✓ Unique Design for Less Smoke
- ✓ Larger Surface, More Cooking
- ✓ Lightweight, Easy to Transport
- ✓ Free Standing or Built-In
- ✓ Modular, Removable Legs
- ✓ Low Maintenance

LUME MULTI-SIDED  
NON SEAR



LUME MULTI-SIDED  
SEAR COOKING SURFACE



GRILL POST & COVER





## Patented, Sound-Reactive Fire Technology

Put on an incredibly entertaining display of fire by making the flames dance to the beat of music & listen with the integrated sound system.

- For versatile listening options connect using Bluetooth, USB, or auxiliary.
- Kit includes Gas Insert, Touch Screen Controller, Speakers, and LED Light Strip



## The Best Room in the House Isn't in the House At All



### Fire Gear is offered in two types of burner and three ignition systems

#### STAINLESS STEEL BURNER

- Traditional gas fire pit insert
- 50,000-75,000 BTU

#### PRO SERIES BURNER

- Features a brass burner with less ports, creating a taller, hotter flame.
- 100,000-140,000 BTU

### Ignition system

#### AWS (ELECTRIC IGNITION)

- Requires electrical hookup with Safety Shutoff

#### TMSI

- Battery operated manual spark with Safety Shutoff

#### MT

- Manual key valve and ignition



PRO SERIES SQUARE BURNER



STAINLESS SERIES SQUARE BURNER

# OUTDOOR LIVING



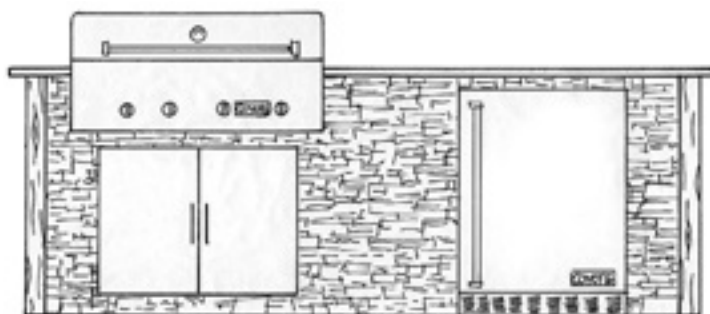
## 4' Kitchen

- Island Structure: 3'6" W x 30" D x 34" H
- Countertop: 4' W x 36" D x 1.5" H
- Summerset- 26" Sizzler Grill- 36,000 BTU's
- 26" double access doors



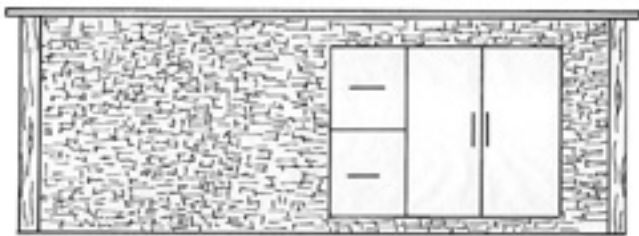
## 6' Kitchen

- Island Structure: 5'6" W x 30" D x 34" H
- Countertop: 6' W x 36" D x 1.5" H
- Summerset- 32" Sizzler Pro Grill- 56,000 BTU's with 15,000 BTU IR Back Burner. LED illuminated knobs.
- 26" double access doors



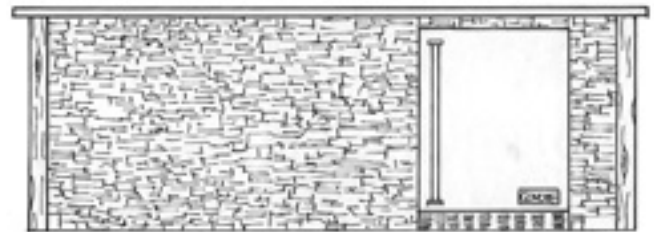
## 8' Kitchen

- Island Structure: 7'6" W x 30" D x 34" H
- Countertop: 8' W x 36" D x 1.5" H
- Summerset- 32" Sizzler Pro Grill- 56,000 BTU's with 15,000 BTU IR Back Burner. LED illuminated knobs.
- 26" double access doors
- 21" Summerset Refrigerator



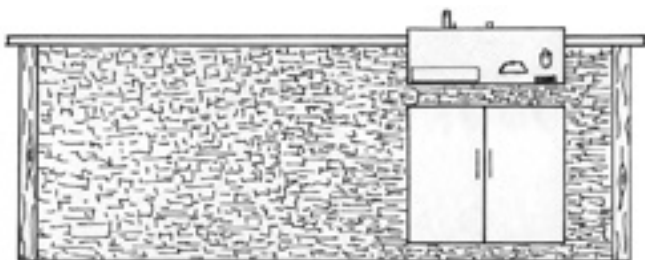
## Bar with Storage

- 8' of seating space
- 37.5" bar height with 10" overhang on back side
- Summerset double access doors with two drawers



## Bar with Refrigerator

- 8' of seating space
- 37.5" bar height with 10" overhang on back side
- 21" Summerset Refrigerator



## Wet Bar

- 8' of seating space
- 37.5" bar height with 10" overhang on back side
- Summerset Refreshment Center
- 26" double access doors

# OUTDOOR LIVING



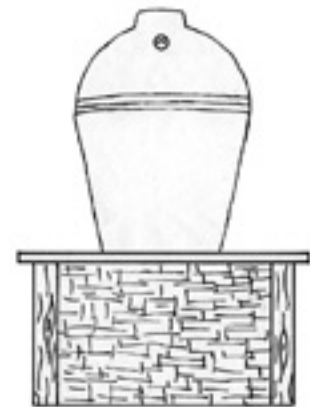
## Pizza Oven Stand

- Island Structure: 30" W x 30" L x 36" H
- Countertop: 36" W x 36" D x 1.5" H
- WPPO Karma Series Pizza Oven
- Can be added to any Kitchen or Bar
- Can be purchased without Pizza oven for extra countertop space or use as a large pillar



**PURCHASE WITH US —  
INSTALL YOURSELF!**

**VISIT OUR SHOWROOM TO SEE  
EVEN MORE OPTIONS**



## Kamado Stand

- Island Structure: 30" W x 30" D x 17.5" H
- Countertop: 36" W x 36" D x 1.5" H
- Asado Smoker, Sear & Grill Option
- Can be added to any Kitchen or Bar
- Can be purchased without Asado for use as a small pillar



## Wood Fire Pit

- Structure: 30" W x 30" D x 17.5" H
- Countertop: 36" W x 36" D x 1.5" H
- Custom Fabricated Stainless Steel Fire Pit Insert



## Gas Fire Pit

- Structure: 30" W x 30" D x 17.5" H
- Countertop: 36" W x 36" D x 1.5" H
- Firegear Push Button Start 20" Stainless Steel Burner (LP or NG)
- Glass sold separately

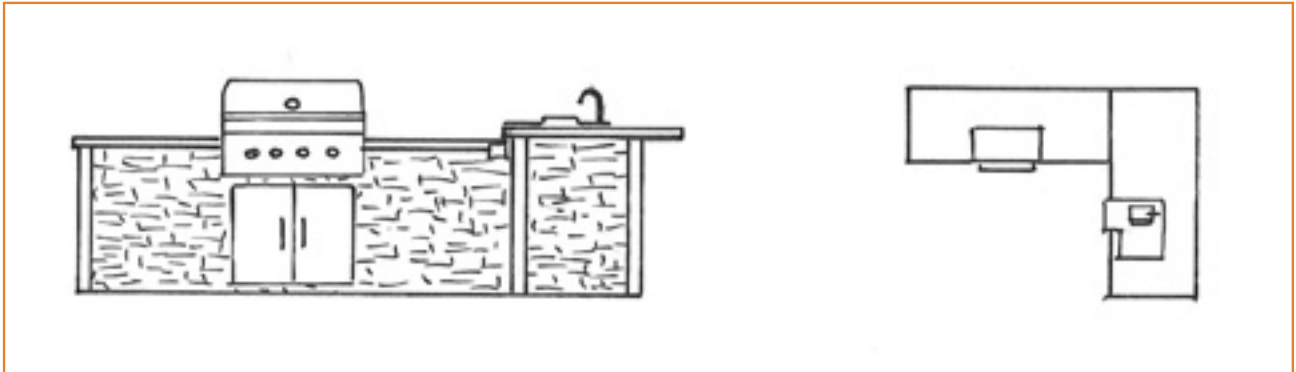


## Fireplace

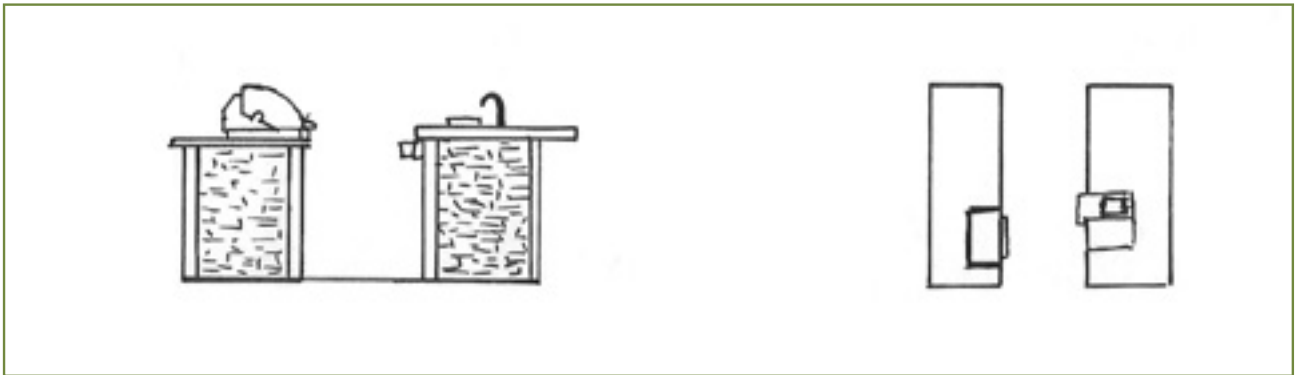
- Structure: 60" W x 24" D x 42" H
- Custom Fabricated Stainless Steel Fireplace Pit Insert with 18"x36" opening
- HPC Push Button Start - 27" H-style Burner (LP or NG)
- Logs and lava rock sold separately



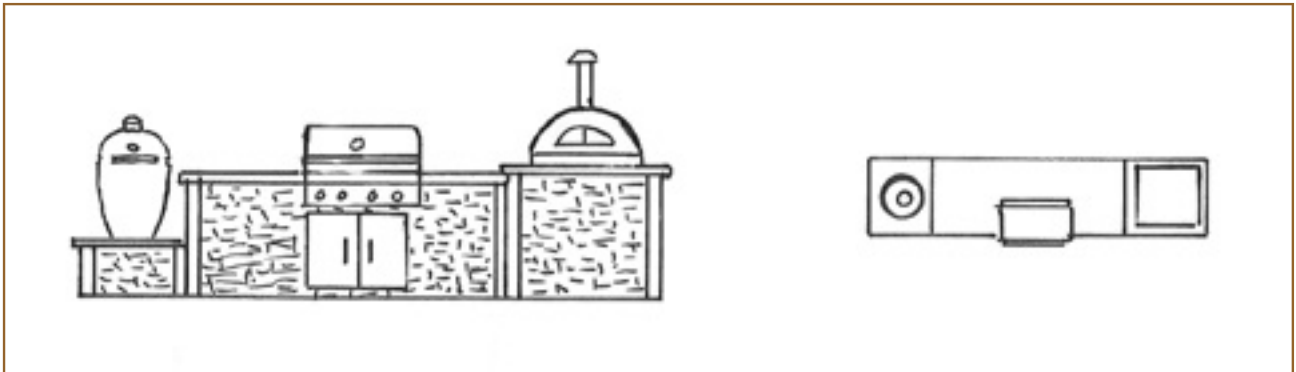
# OUTDOOR LIVING



*L Shape Layout*



*Parallel Layout*



*Linear Layout*



## Color Selection

### Structure and Color options

#### Stone



Dry Stack - Gray



Dry Stack - Brown

#### Barn Wood



Barnwood - Gray



Barnwood - Brown

#### Corner Selection

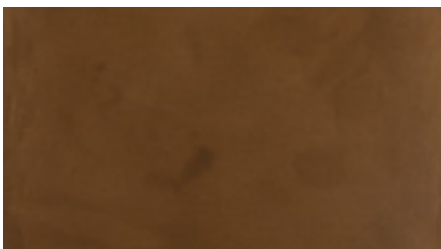


Brown

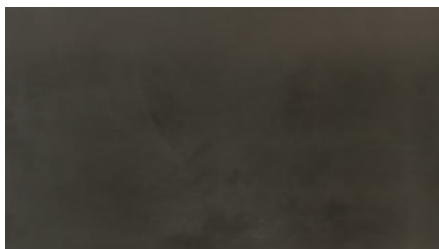


Gray

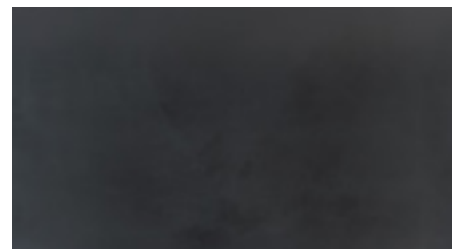
#### Countertop



Brown

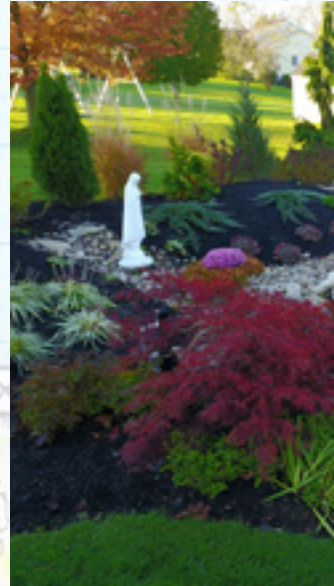


Gray



Bluestone

# DESIGN & INSTALLATION



# LANDSCAPE | HARDSCAPE | LIGHTING



# WATER FEATURES

Water Features provide a focal point to your landscape or hardscape project. The sound of running water is relaxing and peaceful.

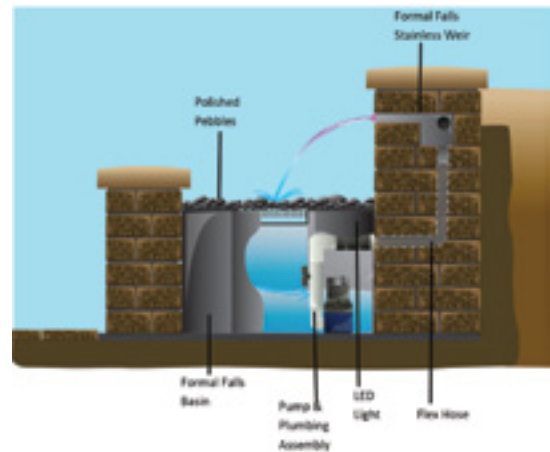


## BUBBLE ROCK/FOUNTAIN

**SPACE:** Small footprint, Approx. 4'x4'

**COST:** Starting at \$2,500

**MAINTENANCE:** Low Maint, Pull pump for Winter

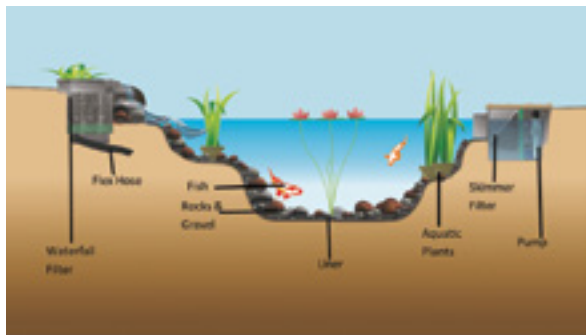


## FORMAL FALLS

**SPACE:** Small footprint, fits into hardscape project

**COST:** Custom pricing based on project

**MAINTENANCE:** Low Maint, pull pump for Winter

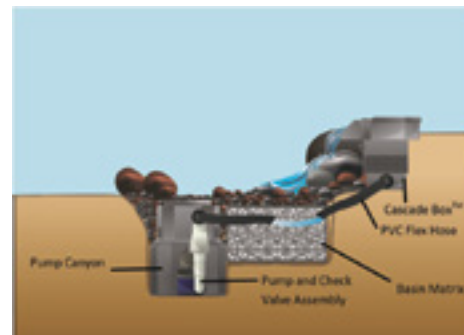


## KOI POND

**SPACE:** Medium to Large footprint, 6x8' to Custom

**COST:** Starting at \$9,500

**MAINTENANCE:** High Maint, Spring and Fall Cleaning with regular Summer Maint. Pull pump or leave running in Winter



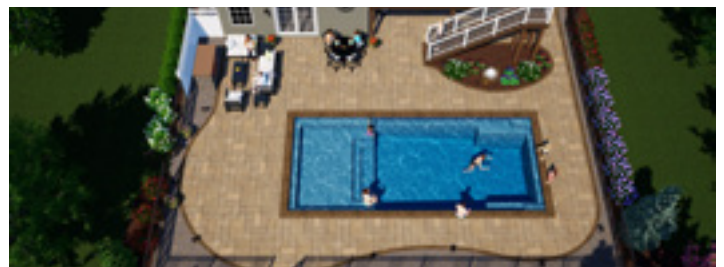
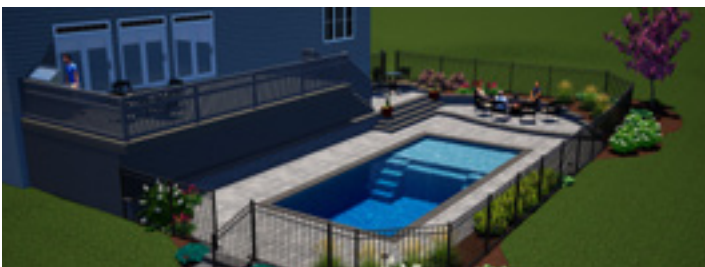
## PONDLESS WATERFALL

**SPACE:** Medium to large footprint, 3-17' long

**COST:** Starting at \$6,500

**MAINTENANCE:** Medium Maint, pull pump for Winter

# POOL DESIGN & INSTALLATION



**Boulder, rock and masonry features** can add natural beauty and a special type of tranquility to the pool area of your home. These can be used to create features such as waterfalls, boulder formations, grottos, steps, rock gardens and more.



# SHOWROOM GALLERY



# PROJECT GALLERY



**VISIT OUR SHOWROOM**

1090 Zion Road, Bellefonte | 814-353-8300

[jrsstatecollege.com](http://jrsstatecollege.com)



# VISIT OUR SHOWROOM

1090 Zion Road, Bellefonte  
814-353-8300

Featuring Custom Creation Products



[jrsstatecollege.com](http://jrsstatecollege.com)



@jrslandscaping\_statecollege



JRSLandscaping

